

StripTool extension (plot graphs)

Carlos Galdino

Last update: 1 March 2016

- In this tutorial, we are going to talk about StripTool extension
- This tutorial is based on StripTool documentation
<http://www.aps.anl.gov/epics/extensions/StripTool/index.php>
- Don't hesitate to send me questions, comments and suggestions.

Installing

On linux, just download and unzip the files inside extension/src folder

<http://www.aps.anl.gov/epics/extensions/StripTool/index.php>

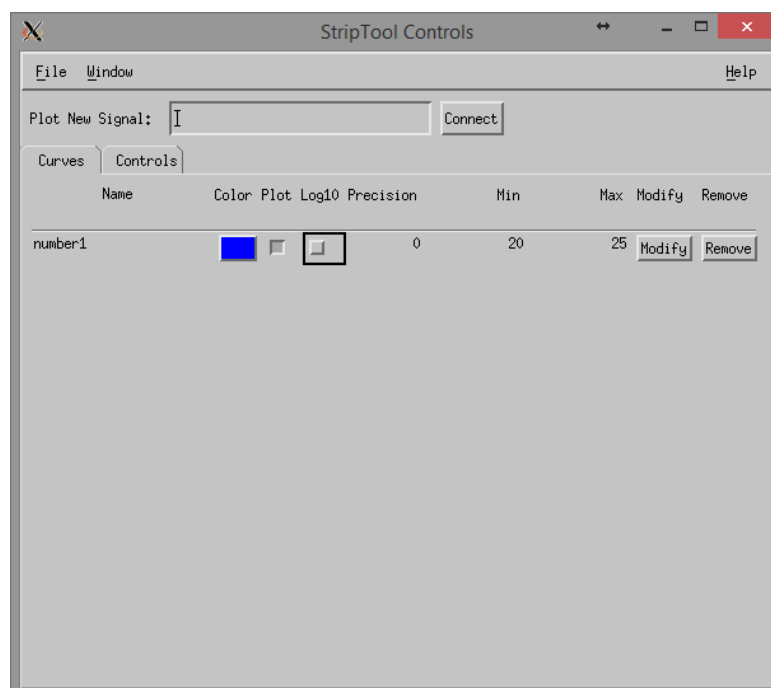
On windows, you already got it if you downloaded the windows epics tool (check GUI tutorial).

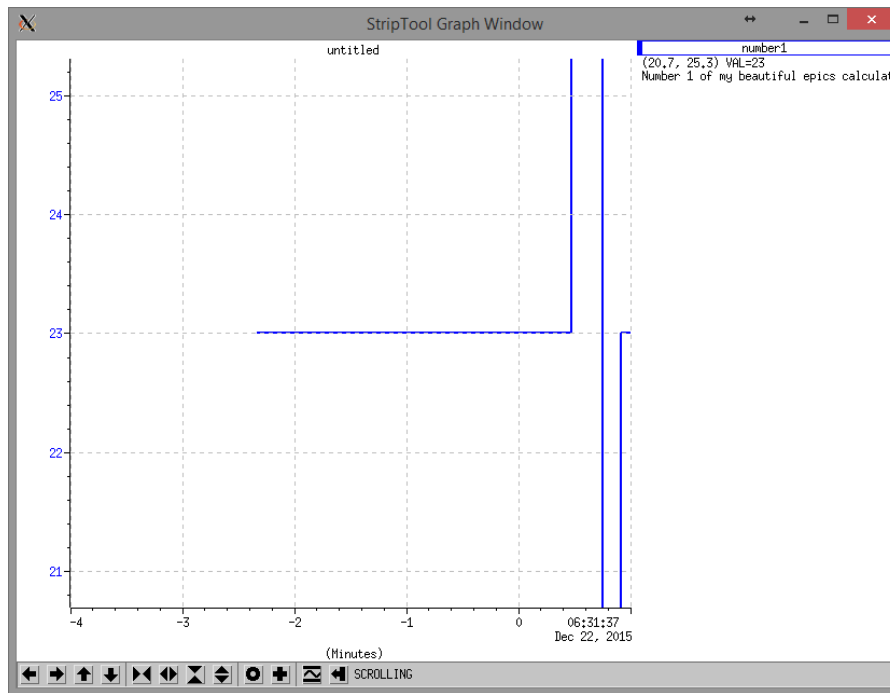
StripTool

Run our calculator and start StripTool. On linux, use the command StripTool to start StripTool. On windows just go to windows epics tools folder and click on StripTool.exe.

On plot new signal write number1. In the graph window you will see number1 being plotted, change it's value to check the plot.

StripToop has lots of options (like change plot colors). All these options are very straight forward, I'm not talking about all of them here. Take a time to modify your plot and get familiar with all the StripTool functionality.





On file>>save as, save the stp file. Save it under *App/Op/stp. You will probably need to make a new folder called stp (this isn't really necessary, you can save it anywhere).

```
C:\epics\myCalculator\myCalculatorApp\Op\stp
```

Now, if you close and open StripTool again, you just go to File>>Load and load the .stp file and all the records and parameters you set will be loaded.